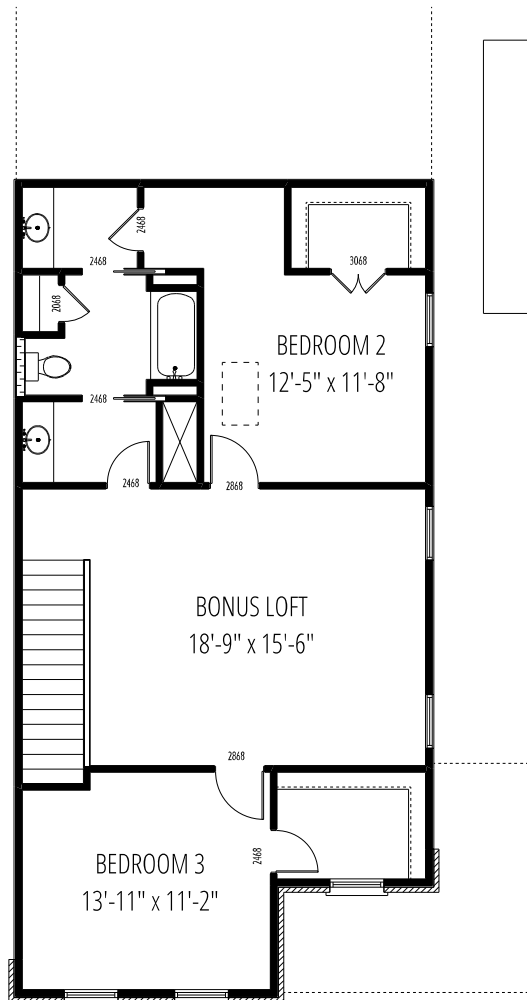
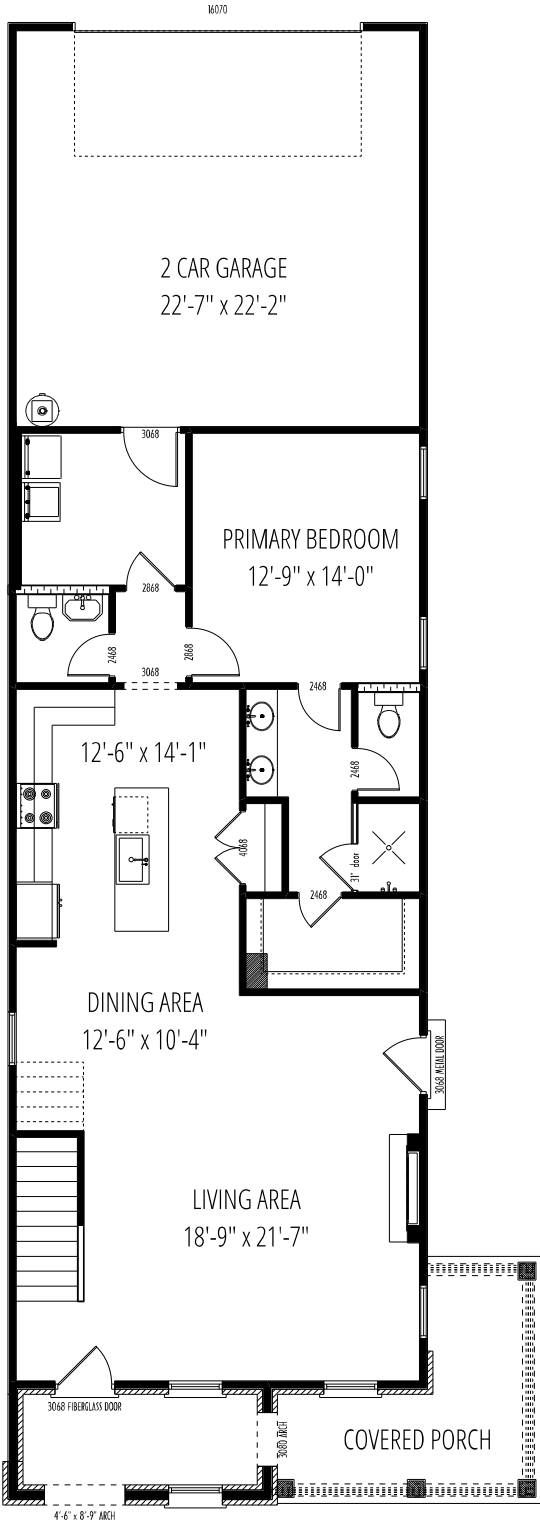


# VICTORIA II TUDOR

## Wembly Park Lot 5



NOTE: front porch rails are optional unless required by local and state codes.



SQUARE FOOTAGE:

MAIN LEVEL = 1252  
 UPPER LEVEL = 965  
 TOTAL HEATED = 2217

GARAGE = 519  
 FRONT PORCH = 216

NOTE: SOME FEATURES SHOWN ABOVE ARE OPTIONAL  
 All dimensions are approximate. Builder reserves the right to make minor changes if necessary to improve the product.